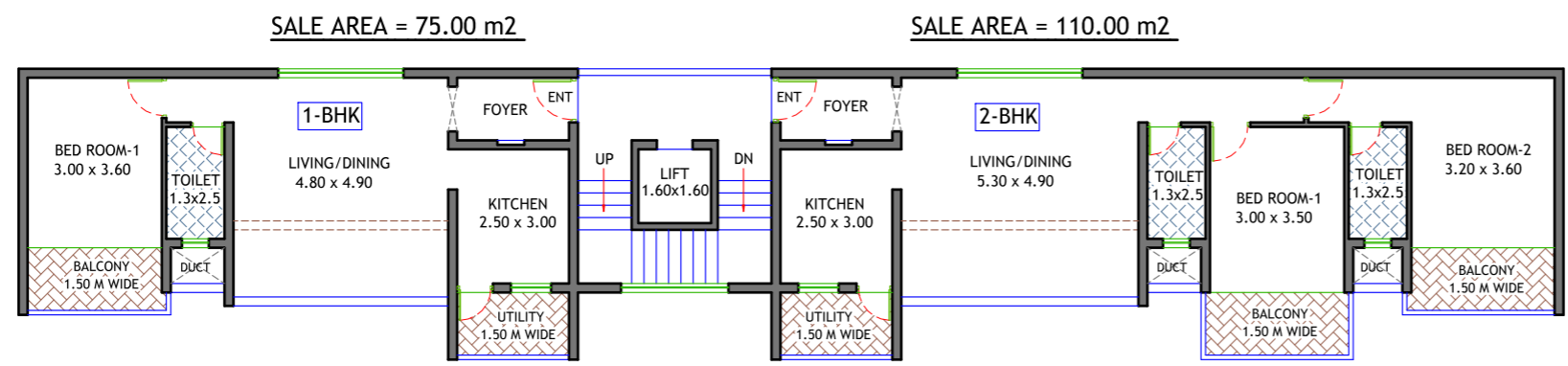


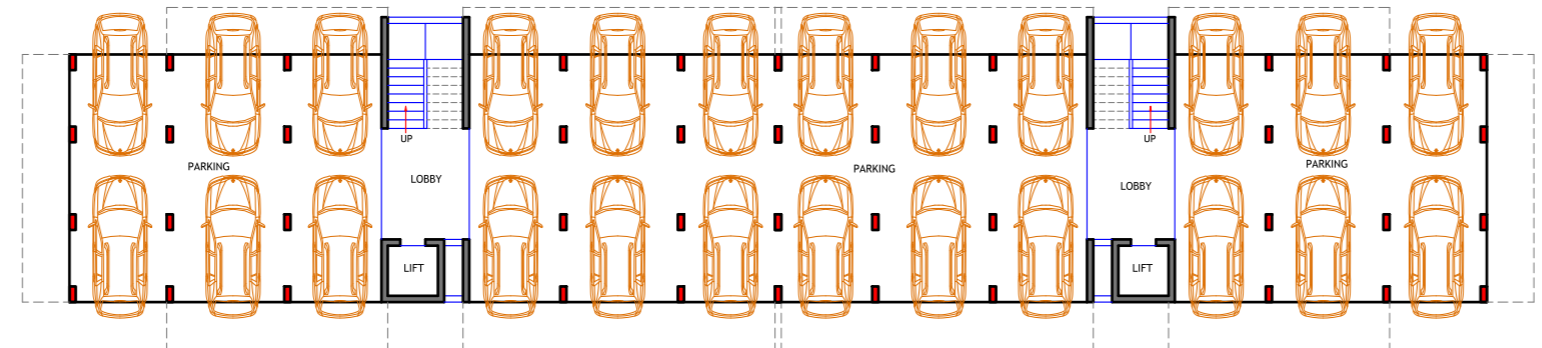
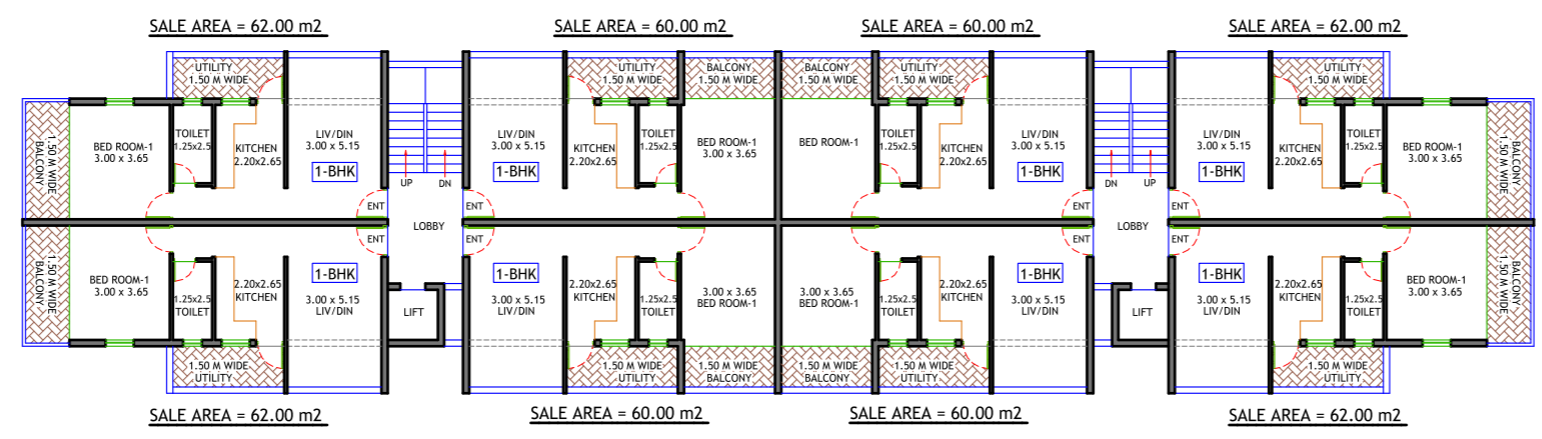
2-BHK FLATS = 4 nos x 4 block  
 1-BHK FLATS = 4 nos x 4 block  
 1ST FLOOR TO 4TH FLOOR PLAN  
 F.A.R = 477.0 m<sup>2</sup> x 4 block  
 SALE AREA = 740.00 m<sup>2</sup> x 4 block

AREA STATEMENT		
a	TOTAL PLOT AREA	6275.00 m <sup>2</sup>
b	AREA UNDER PRIVATE FOREST	2289.00 m <sup>2</sup>
c	AREA UNDER SETTLEMENT ZONE	3986.00 m <sup>2</sup>
d	AREA UNDER ROAD WIDENING	85.00 m <sup>2</sup>
e	NET PLOT AREA	3901.00 m <sup>2</sup>
f	PERMISSIBLE COVERED AREA (c x 40%)	1560.40 m <sup>2</sup>
g	PERMISSIBLE F.A.R - ZONE VP-1(80 %)	3188.80 m <sup>2</sup>



\* PROPOSED F.A.R OF THE PROJECT = 1277+1908 = 3185.00 m<sup>2</sup>  
 \* PROPOSED SALE AREA OF THE PROJECT = 1952+2960 = 4912.00 m<sup>2</sup>  
 \* TOTAL FLATS = 64 nos.  
 \* 2BHK FLATS = 16 nos  
 \* 1BHK FLATS = 48 nos

1-BHK FLATS = 32 nos  
 1ST FLOOR TO 4TH FLOOR PLAN  
 F.A.R = 1277.0 m<sup>2</sup>  
 SALE AREA = 1952.0 m<sup>2</sup>



COVERED PARKING = 24 nos  
 STILT FLOOR PLAN

PROPOSED RESIDENTIAL PROJECT ON PLOT BEARING SY.NO-13/4 AT PENHA-DE-FRANCA